

# BUTTERFLY KISSES

UP, UP, AND AWAY WITH ESA

NC COUNCIL OF EPSILON SIGMA ALPHA INTERNATIONAL

## FROM PRESIDENT KRISTEN

I so love seeing the fall colors on the trees. It is such a beautiful time of year! Thirteen of us just got back from a great weekend in Charleston, SC at SERC. It was a great time spending time with each other and all of our other ESA sisters. I personally was thrilled to spend time with two of my former collegiate sisters, what a great time it was to catch up with them. One of my sisters I had not seen in 16 years and yet it was like we had never been apart. I think that is one of the wonderful things about ESA and our members, no matter how long it is that we have been apart we can pick back up right where we left off! This makes me think of how important it is for us to reach out to all of our members, even those who have chosen not to be active in ESA at this time. You never know, reaching out to them might bring them back to ESA and the wonderful opportunities for service and friendship.



I hope your chapters have been thinking about your new project to go “Up, Up, and Away”. I look forward to hearing about these projects. Please consider sending us articles about these projects for the upcoming newsletters and pictures to go with it!

This month we find ourselves very busy with the Give Thanks Walk in Raleigh and Charlotte. I hope you have been getting your pledges and making plans to volunteer that day. If you haven’t registered and signed up to volunteer, please help us out by going to

[www.givethankswalk.org](http://www.givethankswalk.org) to register or pledge to support one of your chapter members. We hope we can have each chapter participating in some way at a walk. Freda Rich is coordinating volunteers for the Charlotte walk and Sharon Frost is coordinating volunteers for the Raleigh walk.



Kristen presents the NC flag at SERC Conference in Charleston, SC!

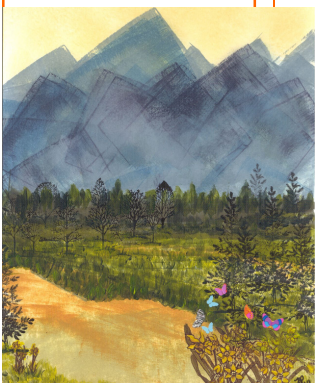
We have had some great connections between collegiate and community chapters, and we are hoping to see even more throughout

## SECOND VICE PRESIDENT, SHARON

Greetings,  
Hope everyone is doing well. It was great to see everyone at the September Council meeting. Thanks to Iota Nu for hosting. Speaking of hosting meetings, I am seeking bids for our upcoming council meetings next year as well as convention. If your chapter would like to host the September 2012, December

2012, March 2013 or Convention 2013, please let me know. Thank you for your advance bids. Looking forward to seeing everyone in Burlington for our December meeting. Happy Thanksgiving. ESA Love, Sharon Frost 2<sup>nd</sup> Vice President

DECEMBER 3, 2011	December Council Meeting - Burlington, NC
DECEMBER 15, 2011	Proposed Bylaw Changes Due
FEBRUARY 19	Articles for March newsletter due to Debbie and Kristen
MARCH 17, 2012	March Council Meeting - Raleigh, NC
May 18 – 20, 2012	NC ESA State Convention



the year. This past month Dotti and Anthe visited with UNC-Pembroke Beta Kappa for one of their meetings and were so impressed with what they saw. They are planning a return trip for their pinning ceremony in December.

I would also like to request that chapter presidents, especially collegiate presidents, get Debbie and myself updated roster changes to reflect your new members so we can make sure everyone is included in the correspondences. Collegiate presidents, an updated roster would be best as I think we still have several people who have graduated, and emails are no longer accurate.

I look forward to seeing all of you on December 3 for our council meeting. If your chapter could not attend the council meeting, I will have your tri-fold for convention.

ESA Love,  
**Kristen Corbell**  
NC ESA State President



The spiritual songs of the Plantation Singers inspires SERC members on Friday night of conference!

---

“Happiness is like a butterfly which, when pursued, is always beyond our grasp, but, if you will sit down quietly, may alight upon you.”  
Nathaniel Hawthorne

---

## MONEY MATTERS WITH TREASURER, MARGARET



The “Asheville Hillbillies” promote 2013 SERC Conference.

This is a reminder to our chapters and MAL’s, please do not forget to pay your state and IC dues. Please note in order to serve on state, SERC, or IC boards, you and your chapter must be in good standing which means paying state and IC dues.

State dues should be sent to Margaret Grant, and these were due September 15. It is very important to pay state dues so our state council can continue to support all of our members and ESA in the best possible way. Community chapters are \$25 per chapter plus \$20 per member and collegiate chapters are a flat \$50. There is a 10% penalty for paying these dues past the due date of September 15. MAL’s are \$20 per member. These dues can be remitted to Margaret Grant, 810 Oyster Point Drive, Wilmington, NC 28411.

Also, chapters need to pay their \$35.00 chapter dues to IC. These should be sent to Vickie Farris our IC treasurer. Kristen has a list of those needing to pay IC dues, and will share this with those still outstanding. Mail IC dues to:

Vickie Farris  
1020 Bower Dr.  
Idaho Falls, Id 83404



**Margaret Grant**  
NC ESA State Treasurer

“Just living, is not enough, said the butterfly, one must have sunshine, freedom and a little flower.”  
Hans Christian Andersen

## CHAPTER PRESIDENT LIAISON

Hi Chapter Presidents:

I hope you are having a wonderful year so far in your position as President of your chapter.

Time really goes by and before you know it your year is over. Have fun, enjoy the experience and don't let it overwhelm you. At this time I would like for you to begin thinking about your position for next year. If you are a new chapter, volunteer for another officer's position, secretary or treasurer etc. If you have gone thru your chapter officers then consider a state committee or a place on the board, if you qualify. Review these qualifications as an educational at one of your meetings.

New chapters as well as established ones, don't forget to use state and national web sites as well as your IDEALS book and don't forget you can always call on a sister.

Look forward to seeing you at December Council!!

Shirley Fowler - Chapter President Liaison



Thursday dinner in downtown Charleston before SERC Conference.

## UP, UP & AWAY IN ESA FOR ST. JUDE—FROM ANTHE

Our St. Jude Radiothons, Walks and extra projects have begun!

I visited UNC Pembroke in October with Dotti Hunkele and we raised \$22.00 for their "Butterfly Kisses" Project. Dinner was brought in and everyone paid a \$1 towards their extra project for St. Jude. Way to go Pembroke!

I would like to Welcome Kari Healey as our new **Junior ESA for St. Jude Coordinator**. Kari and I will work together to help both Collegiate and Community Chapters with their St. Jude Fundraising.

I just got back from SERC in Charleston where we raised **\$ 201,963** for St. Jude! We had two year old Bree, a St. Jude patient that just finished her chemo that week. She was adorable and it really made you sit up and take note why we need to keep raising money for St. Jude.

I look forward to seeing everyone in December in Burlington. I hope to see pictures of your chapters "**Butterfly Kisses**" Project. I know I'll have pictures from Alpha Nu's dessert project!

Sunshine & Love is ESA,

Anthe Tyndell, Senior ESA  
for St. Jude Coordinator



Donate  
\$40 or more  
and receive  
this limited  
edition pin

[Donate Now](#)



Alpha Nu met last night and we had our Butterfly Wishes Project for St. Jude. Everyone brought a box (I gave out white cupcake boxes at the last meeting). We made \$35 and after the meeting we opened all the boxes and shared the desserts!

Being an ESA member in North Carolina is a pretty amazing thing. North Carolina is one of the few states working on making lasting connections between collegiates and community members. To be able to have that extra ESA support from men and women who have been in the same spot you are in is an amazing feeling! It all started back in 2006 from one of our own ladies in the Alpha Nu chapter. Ms. Dotti felt the passion to get connected to the collegiate members. Since then each traditional chapter has been paired up with a collegiate chapter. In the last issue of the newsletter there is a list of collegiate chapters paired with their traditional chapter. You might ask, “Well what now?” We have come up with a list of ideas you can do with your chapter to gain that extra ESA bond.

- Exam packages: Traditional chapters can send goodies to help the collegiate chapters get through that tough time each semester.
- Birthday cards: Everyone loves to get a birthday card so why not share it with your ESA family?
- Attend different philanthropic events: St Jude walk, Relay for Life, Games etc..., go and support your ESA family by helping spread the word!
- The most important event to a chapter, the pinning ceremony: Find out when your chapters are having their pinning ceremony and go support them.

Tracy and I have also had the idea of having each collegiate chapter get together since the national collegiate meeting was cancelled. I feel this will be a great way to get to know each chapter since most of us have never met before. We would meet in 2012 so that way everyone can plan for this exciting event. If any chapter would like to give an idea on where we should meet we're all ears!

Britney L. Abernethy  
NCT&C Co-Chair



“The butterfly counts not months but moments, and has time enough.”

Ragindranth Tagore



UNC Pembroke and Alpha Nu create some memories.

Collegiate Chapter	Traditional/Community Chapters
Beta Kappa, UNC-Pembroke	Alpha Nu, Wilmington Beta Psi, Burlington Omicron Phi, Durham
Delta Chi, Belmont Abbey	Alpha Zeta, Charlotte Chi Nu, Harrisburg
Delta Psi, Elon University	Alpha Iota, Greensboro Omega Sigma, Durham Phi Chi, Elon
Omega Pi, East Carolina	Alpha Omega, Greenville Iota Nu, Hillsborough Kappa Nu, Raleigh

Hello Sisters:

I hope each of you are enjoying this Fall season. It is one of my favorite time of year; the cooler weather, change in color of leaves, festivals and pig pickins. Also the planning for December Council.

I had the fortune to attend SERC this past weekend and what a wonderful learning experience. I tried to pay close attention to details since NC will be host 2013 and we will need money in the bank so I hope everyone has sold their raffle tickets and will need more in December. I have heard from several of you and sales seem to be going well. This is fishing season so the tickets should be an easy sale. Some people are putting them in Christmas stockings, I am adding one to the card I send to my brother and sister @Christmas. Be creative in your sales, don't make it hard. \$5.00 for a chance to sit on the beach for two days, what woman would not leave home for that. I do hope you checked out the web site for the hotel and saw that it was a nice place – ocean front. REMEMBER Two people can enjoy: 2 night stay @ocean front motel, Carolina Beach, NC; Gulf Stream Fishing or 18 holes of golf; dinner for 2 – 2 nights.

At December Council meeting Alpha Nu, your finance chapter this year will (with your help) have a Chinese Auction. If each chapter would bring 3 items for sale (more if you wish) and each MAL bring 1 item then we should have a good choice for bidding. Such items as Christmas decorations, ornaments, baked goods have always been good sellers.

As always I appreciate your help – Love & Friendship to each of you –

Shirley Fowler

Finance Chair

## NC ESA Convention 2012

***Omicron Phi invites you to “Diamond Jubilee”, NC ESA’s 60<sup>th</sup> Annual State Convention!***

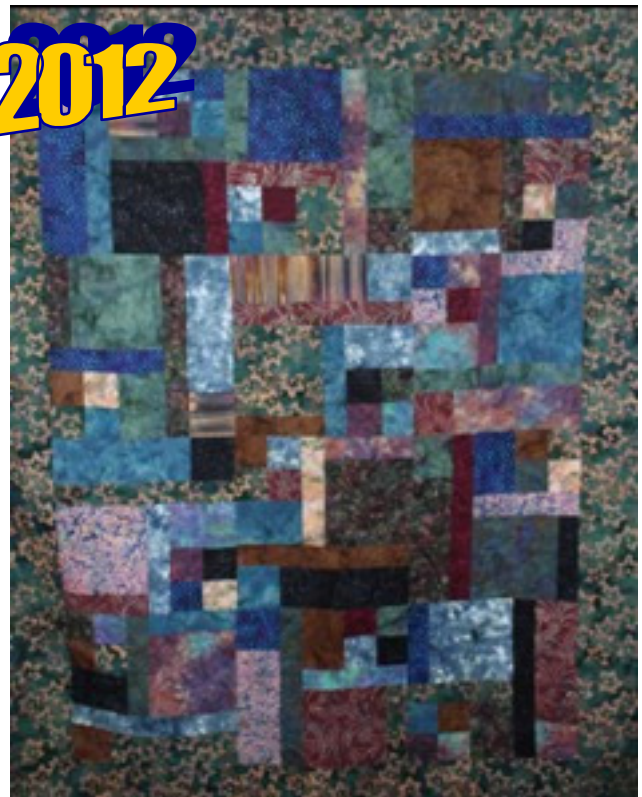
***When: May 18 – 20, 2012***

***Where: Embassy Suites, Greensboro, NC***

***Convention Raffle: Falling Leaves Lap Quilt, 56” x 72” with 20 beautiful batik fabrics***

***Tickets: 1 for \$5.00 or 3 for \$10.00***

***Drawing will be held on May 19, 2012; no need to be present. Please see members of Omicron Phi for tickets.***



Picture of Falling Leaves Quilt

## GREETINGS FROM BETA PSI, BURLINGTON

**Where did the summer go?** It is hard to believe that fall is here and the holidays are just around the corner. We have been busy making plans for the December Council meeting that will be held in Burlington on December 3<sup>rd</sup>. We look forward to the opportunity to host this meeting and spending time with our North Carolina ESA friends. A flyer will be attached with the newsletter with details regarding the council meeting.

**We have continued to meet each month with Hearts of Gold Home and Springview Assisted Living.** This quarter we have played bingo, provided refreshments each visit and also brought freshly-made Brunswick stew for both facilities for an evening meal. We are currently making plans for Christmas parties for each facility.



### Honoring Our Veterans



This past Wednesday, November 2, we met with Post 63 American Legion and served dinner to the veterans. This is the third year that we have done

this for Post 63. One thing for sure... the veterans at Post 63 love to see the Beta Psi members come... the food, as always, was absolutely delicious. We had a real feast.



Post 63 members stay real active in the community. They participate in funerals for veterans visit schools and give flags to students and often help that in need. They care about one another. Their devotion to country and fellowman didn't stop after the war they served in... they are still serving honorably and faithfully. Take time this month to shake a hand and say "thank you" to our veterans and to the men and women who are currently serving so bravely. They have sacrificed so much in order for each of us to have the freedoms we have in this great country.



On the Wings of a Butterfly

Your friendship is special  
Like the flowers that bloom,  
Or when a butterfly emerges  
From within its cocoon...

You remind me of that butterfly,  
Loving and free,  
Bright and colorful,  
For the world to see...

We will share sunshine and rainbows;  
Sometimes, the rain and the snow;  
We'll stand together through it,  
While the cold winds blow...

When the time is right,  
We won't stop to ask "Why?"  
Our friendship will take flight  
On the wings of a butterfly...

By Christine McClimans



*ESA Sisters Hand Stamped*

*Charm & Accessories*

*Great Gift Idea for You &  
Your ESA Sisters*

*Can be personalized*

*Charm & Necklace Set \$20*

*Charm Only \$10.00*

*Anthe Tyndell*

*[outhernt@mail.com](mailto:outhernt@mail.com)*



Alpha Nu "rules" at the Wilmington Radiothon!



## ALPHA NU, WILMINGTON

Since our installation on August 7<sup>th</sup>, our membership total is: 6 full time members

Susan Fritz is now with her Lambda Nu Chapter #5214 in Kingsland Texas. Susan will be returning sometime in the spring of 2012. We have enjoyed her presence this past year and all her support to Alpha Nu chapter.

Jane Stutzman- is now a MAL, however, she comes to our meetings when she is available and supports the Alpha Nu chapter. We hope in the future she will be able to join us again as an Alpha Nu member.

Britney Abernethy is now a MAL living in Fayetteville, NC. Britney never became a member of Alpha Nu. She moved to Fayetteville for a job opportunity.

Anthe Tyndell and Dotti Hunkele visited UNC Pembroke on October 3<sup>rd</sup> to present 3 educational programs on the history of ESA, St. Jude, and the Philanthropic work of ESA. We also presented ideas for their chapter as well as what Alpha Nu does for philanthropic hours. Handouts were given to the students on different projects as well as a philanthropic work sheet to keep track of their hours and monies spent. We also provided dinner from Subway, drinks, candy corn, chocolate and homemade Halloween cupcakes. We were able to sit and talk with them and discovered that they did not wear their pins. Anthe asked, so when do you wear your pins?

They said, never. We told them Alpha Nu must wear their pins to meetings or they would be charged 1 dollar for no pin.

At this point all the members got up and went to their rooms and came back and put on their pins. They were so excited to have their pins on at last. We thoroughly enjoyed our visit and plan to return on December 2<sup>nd</sup> for their pin ceremony.

Philanthropically we have split our chapter into 2 counties so the Brunswick county members would have less miles and time spent on the road to accomplish their volunteer work. Alpha Nu plans to host a Christmas party again this year at Sherwood Manor with both counties participating. Alpha Nu collected pet supplies for the pet shelter in October and plan to bring food for the area food pantry in November.

The Tyndell family had a wedding on October 16<sup>th</sup>. Their youngest son Drew was married in Atlanta.

Dotti Hunkele, Anthe Tyndell, Shirley Fowler, Sylvia Liner and Susan Fritz went to SERC in Charleston and had a great time with our fellow ESAers. Sylvia and Anthe participated in a booth at SERC. Anthe sold necklaces with ESA Sisters written on a silver disc and Sylvia sold Mary Kay and Shirley sold Beach raffle tickets.

Dotti Hunkele



## OMICRON PHI, DURHAM

We have a full calendar of activities!!

The Raleigh St. Jude Give Thanks Walk is being held at Crabtree Valley Mall November 18-19, 2011. Everyone has volunteered to help in some way.

Along with Omega Sigma, Cary, we will be booth sitting at Christmas Carousel. This event is held annually at the Raleigh State Fairgrounds in the Graham Building during Thanksgiving weekend. Area crafters and retailers sell holiday items. Santa is always on hand for pictures.

We have two math-a-thons planned for St. Jude Children's Hospital. St. Michael's Catholic School in Cary will hold its event in January. Baucom Elementary School in Apex will have its event in March.

Planning continues for the NC State Council Convention to be held in Greensboro May 18-20, 2012. Kristen Corbell and her mom, Anne Corbell, have made a quilt to be raffled to help with convention expenses. Omicron Phi looks forward to hosting this event. It is our NC State Council's "Diamond Jubilee"!!!

We look forward to see everyone at the Raleigh Give Thanks Walk and the council meeting in Burlington.

Peggy Chilton



NC contingent all dressed up for SERC Banquet.



## ALPHA ZETA, CHARLOTTE

Alpha Zeta Ladies have had a busy fall. Our annual fundraiser of selling Pecans had lots of orders.

We have had our monthly visits to PALS where we play bingo with the clients and take a birthday cake for everyone to enjoy. We will be filling Christmas Stockings for the Salvation Army this year and we will also work at their location to help distribute them. Several of us will be working at the Give Thanks Walk, along with Dave Campagna. Dave is always willing to help on all of our projects.

Freda Rich attended SERC in Charleston. Joyce Molenaar will be having hip replacement surgery in November. And we are looking forward to our Annual Christmas Dinner at Joyce's home.

Please keep Dave in your prayers as he is still not up to par after his hospital stay over the summer.

Freda Rich

---

**“The fluttering of a butterfly's wings  
can effect climate changes on the  
other side of the planet.” Paul Erlich**

---



## IMPORTANT NEWS FROM BJ CLARK, ESA EXECUTIVE DIRECTOR

Dear Chapter President,

Please read and share the following message with your chapter membership as soon as possible. EVERY member of your chapter will be impacted by this information. Here is the message:

After ten years there will be a change in ESA's member dues structure as of January 1, 2012. While this change has become necessary as a result of the decline in our membership, we are optimistic that the recent membership activity that we have seen among collegians and within state councils and chapters that are actively emphasizing membership development will assist us in maintaining reasonable membership costs for the future.

The new dues structure will be: \$49.00 for all regular members (an increase of only \$4.00) and discounted amount of \$45.00 for all senior members (65 years of age and older).

Please note that there will be no changes in new member costs throughout the remainder of the ESA year that ends May 31, 2012: This should provide every member with a good opportunity to sponsor new members for their chapter to ensure the continuing strength of ESA in local communities. It is my greatest hope that this necessary change in dues will alert our members to increase their membership recruitment efforts to maintain the strong support that ESA needs for

pursuing all of its philanthropic and educational programs. All ESA members need to increase their awareness of other caring people in their community who should be introduced to our wonderful organization. Whether these are prospective members we currently know or those who we meet at ESA events, each of us needs to share the ESA story and the difference it can make in the lives of others.

If you or your members have questions, ideas, or need additional information regarding membership recruitment, please do not hesitate to contact our Headquarters office. This information will be posted on the website, but we depend on you to share this information with your chapter as soon as possible.

Thank you for your support and for all of your efforts to continue the good works and fellowship of ESA.

ESA occupies an important and positive place in our society. Let's keep it that way by challenging ourselves to reach out to others to keep ESA strong.

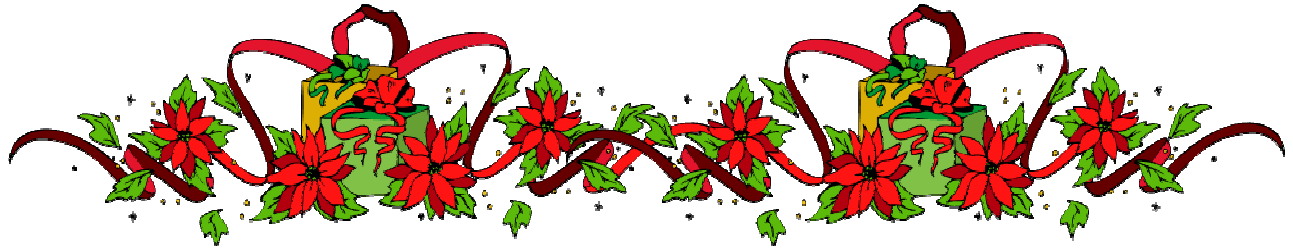
Wishing you all the best,

BJ Clark, Executive Director

“How does one become a butterfly?” she asked. “You must want to fly so much that you are willing to give up being a caterpillar.”



Shirley and Dotti celebrate birthdays in Charleston with coconut cake and her sisters at SERC conference.



*December Council Meeting*

*Hosted by Beta Psi*

*When: December 3, 2011*

*Where: Emmanuel United Methodist Church,  
2331 LaVista Drive, Burlington, North Carolina*

*Time : Executive Board will meet at 9:30 a.m.*

*Council Meeting starts at 10:00 a.m.*

*Registration Cost: \$11.00*

*RSVP to Kiwainia Stogner by November 23, 2011*

*At – 336-376-3998*

*Or E-Mail – [SpecialKStogner@aol.com](mailto:SpecialKStogner@aol.com)*

*Finance Project – 3 Christmas Items per Chapter*

Directions: Traveling South on I-85/40 to Burlington, take Exit 145 and turn Right... Traveling North I-85/40, take Exit 145 and turn left. Go to 3<sup>rd</sup> stop light and turn right onto Harden St/ Chapel Hill Road (Kentucky Fried Chicken on right at light) Turn right at first stop light onto LaVista Drive... Emmanuel United Methodist Church, 2331 LaVista Drive, Burlington, is on right.)

