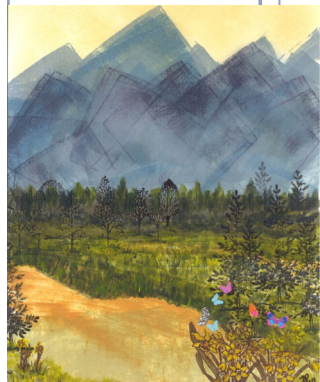


BUTTERFLY KISSES

UP, UP, AND AWAY WITH ESA

NC COUNCIL OF EPSILON SIGMA ALPHA INTERNATIONAL



FROM PRESIDENT KRISTEN

I hope this newsletter finds you well and enjoying your summer. It is hard to believe that August is upon us and it's time to start planning a fun year of serving others. I know several of the chapters will be having their planning meetings this month. I encourage each of the chapters to think of one new project you will do together as a chapter this year and then share it with the state. This can be anything you wish. Use your imagination and share with all of us so we can learn from you. Don't forget to let Laura know so she can put it on the website! You will find lots of ideas in this newsletter



Kristen, Proud North Carolinian and ESA State President!



in our St. Jude and Philanthropic articles. You will hear even more at the council meeting. When thinking of these projects, remember St. Jude, Hope for Heroes, Easter Seals, and/or a service project where you join another chapter to do together.

This year we also want to reach out to our collegiates. They have such dynamic ideas and have very similar interests of serving others. So, let's reach out and work together. They can become some of your most active members now and in the future. I personally cannot imagine what my life would be like without ESA in college and afterwards. So let's work together to build a closer relationship. Hopefully some more of our collegiates will decide to keep ESA in their lives after graduation! Wouldn't that be wonderful!

Seven of us just got back from IC convention, and we all had a blast in Overland Park, Kansas. Jan was our official tour guide taking us to lots of fabulous restaurants. We participated in the Munchkin March for St. Jude raising over \$100,000! Our state dinner was at Jess and Jim's and we were honored to have Tracy Swanson join

SEPTEMBER 10, 2011	September Council Meeting - Durham, NC (Watts Street Baptist Church)
SEPTEMBER 15, 2011	Chapter and individual dues to Margaret Grant
OCTOBER 28 - 29, 2011	SERC - Charleston, SC (Embassy Suites North Charleston)
November 1, 2011	Articles for November newsletter due to Debbie and Kristen
DECEMBER 3, 2011	December Council Meeting - Burlington, NC
DECEMBER 15, 2011	Proposed Bylaw Changes Due
MARCH 17, 2012	March Council Meeting - Raleigh, NC

SECOND VICE PRESIDENT, SHARON

Greetings, Hope everyone is having a good summer. I am ready for cooler temperatures. I attended IC this year in Kansas. We had a great time. Thanks to Jan for showing us around, picking us up and taking us to the airport. It was great to have someone there who knew the area. Ellen, our St. Jude patient,

was a remarkable young lady to only be 7 years old. She sang to us and brought tears to our eyes. Mark, the young man who spoke on Wednesday afternoon was a great speaker. Both Ellen and Mark very inspirational. I am soliciting bids for the September 2012, December 2012 and March 2013 Council meetings. I also am

asking for bids for Convention for 2013 as well. Chapters please discuss hosting a Council meeting or Convention. If you want to make a bid, please email me at sharonc.frost@gmail.com. Looking forward to seeing everyone in September. Take care. Sharon

us. We heard a wonderful speaker who had Tourette's Syndrome, whose message was to live and let live. He was wonderful to hear and such an inspiration. We heard from two St. Jude families and were honored to have Terri Thomas back with us. North Carolina won two membership awards this year. It was an honor to represent NC as your president, thank you so much to all of you for giving me one of the most precious gifts – your love and friendship. We will have lots of pictures to share with you, but for those on Facebook, I posted over 100 pictures so feel free to check them out to see the fun times we had.

One of the goals Rose Pasillas, our IC president, has encouraged each state to do is charter a new chapter – community, collegiate, ELAN, etc. This can be a chapter in a new area or a chapter with a different focus in an existing area. What if we make a chapter for some of our collegiates who are graduating and remaining in the area? We can help them make a chapter fit the needs of young professionals. If you know of people who would be good prospects, let us know. Your Task Force to do this is myself, Jo Boone, Marcia Kessinger, and Jenny MacKay and whoever else wishes to help! It's not too late to join in, so just let us know, we welcome anyone interested in growing ESA in NC! Thirteen states achieved membership growth this past year, next year let's make North Carolina one of them this coming year!



Our love affair with St. Jude continues in 2011...and it shows

I look forward to seeing you all on September 10th for our council meeting. We will have a Hope for Heroes service project, so check that article out in the newsletter! Together we will go Up, Up, and Away with ESA!

ESA Love,
Kristen

MONEY MATTERS WITH TREASURER, MARGARET

During these difficult financial times, many of us have had to develop/tighten our budget, but this is not a new experience for the NC State Council of ESA. As most of you know, our Council has operated on a conservative budget for many years.

Therefore, it is imperative for each of us to be financially responsible, and timely, both in remittances and expenditures.

At our 2011 State Convention some changes were made in regard to dues structure, as well as due date without penalty.

Standing Rule #1 was amended to state annual council dues would be:

- Community (traditional) chapters..... \$25.00
- Collegiate chapters..... \$50.00
- Individual member (chapter and MAL) ... \$20.00.

The bylaws state dues are payable June 1, but the 10% penalty date is extended to September 15. Thus, if you have not already done so, please remit dues to the treasurer:

Margaret Grant, 810 Oyster Point Dr., Wilmington NC
28411

Please submit legitimate, budgeted expense receipts to the above mentioned for a timely reimbursement. Be advised that all checks for \$250.00 or more require two signatures, which will increase time for reimbursement to be received. Should your request be questionable, it will go before the Executive Board for approval/denial.

It is my pleasure to serve the Council and you as Treasurer, and my goal is to be fiscally, and personally, responsible in execution of my duties.

Look forward to seeing you at September Council meeting, but more important, receiving your dues soon.

Margaret Grant



UP, UP, & AWAY IN ESA FOR ST. JUDE—FROM ANTHE

This year brings a new start for raising money for St. Jude! Our state St. Jude Give Thanks Walks on November 19th in Charlotte & Raleigh should bring out everyone in the state to help in some way. You can form a team, you can work at one of the walks, and you can help with donations from all your friends and family.

ESA adopted St. Jude in 1972 and next year marks our 40th Anniversary raising "Money for The Kids". So lets begin this year with "Big Expectations" to reach our fundraising goals.

Last year we sold St. Jude Quilts for extra St. Jude money and did very well, over \$1,000. We still have more quilts to sell and several chapters still have theirs from last year.

This year at September Council Meeting I would like to hear from each chapter on what extra project you can have for St. Jude. Our goal this year is \$225,000! I have a couple of new fun projects to share with you so lets get creative for your chapter's "UP, UP, & AWAY PROJECT FOR ST. JUDE".

I look forward to seeing everyone and I'm ready to work!

Alpha Nu's Radiothon is September 8th & 9th in Wilmington then we'll be on our way to Hillsborough for Council Meeting. We will share with you a new 40th Anniversary Pin and Team ESA apparel. To order the pin, go to www.stjude.com/esa.



Gina Andersen and I will be working together this year in Raleigh and in the state to help achieve our \$225,000 goal!

GO TEAM ESA!
Anthe Tyndell

GIVE THANKS. WALK CHARLOTTE—FREDA

Give Thanks Walk November 19 members of the Charlotte community along with all ESA's in the area will tie up their green shoe laces and join St. Jude Children's Research Hospital supporters in 80 communities across the country for the St. Jude Give Thanks Walk. This walk is the official kick-off event for the national Thanks and Giving campaign and brings individuals and teams together to raise money to support the children of St. Jude.

Join the St. Jude team and register today.
Register on line at www.givethankswalk.org and locate Charlotte and register your team.

We can use you as volunteers to help set up, register, give out food, be a cheerleader along the way.

We will be having face painting. Our Delta Chi members from Belmont Abbey did this last year and we are hopeful they will be there with us this year. We will also have several activities before the walk such as Mini -Putt Putt, Carnival games, clowns and balloon artists, team photo booth, obstacle course, blow-up slides, marching bands and many other

activities and are planning for a hot dog roast for everyone after the race is over.

If any ESA's members or their family or friends would like to help please contact me.

As this is an outdoor walk it is very different from the inside mall walks. We have a lot of fun that day raising money for the kids at St. Jude.

When: Saturday November 19, 2011

Where: Knights Stadium 2280 Deerfield Drive Ft. Mill, SC
Looking forward to seeing you at the council meeting in September.

Freda Rich

Walking in Memphis...

In March I had the privilege of traveling to Memphis, Tennessee for ESA for St. Jude Coordinator training (ESA Headquarters changed the position title from Circle of Life this spring), and my fourth visit to St. Jude Children's Research Hospital. The weekend was filled with lots of learning and advice for successful events, incredible inspiration from St. Jude children and families, and just a teeny-weeny bit of fun with fellow ESA-ers from across the nation!

...and Walking in Raleigh!

As many of you know, the Raleigh 'Give thanks. Walk.' will be held on November 19th at Crabtree Valley Mall. Last year's walk set a precedent with 250 walkers raising more than \$43,000. This year's walk is expected to surpass previous years, but we need your help to reach our goals of **450 walkers** and **\$70,000!** Here's how you can help:

Register to walk at www.givethankswalk.org, click on register, and then click on Raleigh, North Carolina. Be sure to include ESA and your chapter in your team name to ensure NC-ESA gets credit for the money you raise for St. Jude. If you are forming a work team with a non-ESA name, be sure to let Kristen Corbell know the affiliation with ESA to ensure proper credit is given to your chapter and to ESA.

Encourage your friends and family to walk with you! The event is catered to families and individuals of all ages, so encourage your friends from work, the gym, school, and church to get involved by joining your team or starting their own.

Join a volunteer committee! The planning committee will need volunteers to help get sponsorships, door prizes, food, and other donations before the event. Volunteers will also be needed on November 18th to help distribute pre-registration t-shirts and race bibs.

Volunteer to help during the day of the event! We'll need people to help with registration, breakfast, door prizes, entertainment, and cheering on the walkers. A sign up sheet will be at the council meeting. If you cannot attend the council meeting, but can volunteer please let Sharon Frost know.

We will be taking flyers to local Starbucks and Panera Bread in the coming weeks thanks to several volunteers. .

The planning committee for the Walk has already been hard at work and has made strides toward reaching the goals. The Girls Scouts have committed to registering six teams of at least 10 people and will also be helping volunteer in the 2012 walk. If you have ideas for 'Give thanks. Walk.' sponsors, please let us know. We have a sponsor form that can be used to present to local businesses.

Gina Andersen, Jr. ESA for St. Jude Coordinator

“May the wings of the butterfly kiss
the sun
And find your shoulder to light on,
To bring you luck, happiness and
riches
Today, tomorrow and beyond.
~Irish Blessing



Sharon & Kristen showing off the St. Jude figures from NC

NC ESA Convention 2012



Kristen's Installation and our Executive Board at 2011 State Convention in Charlotte

Omicron Phi invites you to the 60th Annual Convention of the North Carolina State Council of ESA.

When: Friday, May 18 – Sunday, May 20, 2012

Where: The Embassy Suites,
Greensboro, NC

More information to come at the September Council meeting!

NEWS FROM OMICRON PHI, DURHAM

How to Remain Non-Profit?

- ◆ Submit IC Council dues: Chapter, Regional Council, State Council
- ◆ Submit a Tax-Form (Tax Facts) to Headquarters each year by September 15th
- ◆ Submit individual member dues.

What Do I Owe and Where Do I Send It?

- ◆ Individual Member dues are sent to ESA Headquarters. Each member will receive a bill in the mail. These are paid yearly during the month you pledged. Dues are \$45 (unless you are a senior or a Life-Active Member).
- ◆ IC Council dues are due at the beginning of the ESA Year (August 1st) payable before May 1st to be considered in "good standing" and receive voting privileges at IC Convention. These dues are mailed to the current IC Treasurer, Vickie Farris 1020 Bower Dr. Idaho Falls, Id 83404 . Make Checks Payable to: ESA IC Council with chapter name & number on check DO NOT SEND TO ESA HEADQUARTERS.

In June we traveled to Clarksville, VA to celebrate the life of Alecia Burns. She loved ESA and St. Jude Children's Hospital. Her courage during her battle with cancer was an inspiration to us. Debbie Willoughby and Jo Donahue also attended. Debbie brought blue balloons. After we each wrote a message on them, they were released. The sun was shining and the sky was a deep blue. We knew Alecia was with us!! We miss her.

We met for dinner in July at Chili's. It was just a fun night of "girl talk".

August 12-14 is our convention/chapter planning retreat in Southport. We are looking forward to our time together. Gina Andersen received her Masters' Degree from UNC in the field of City Planning and Non-Profit Organizations. She is working for Triangle Community Foundation in Durham. We look forward to seeing everyone in September.

**Peggy Chilton, Omicron Phi- Durham
President**

PHILANTHROPIC IDEAS FROM BRANDY

So, we're all racking our brains for fun service ideas to do this year and nothing is coming to mind except the same old things. As chapters, we need to expand our horizons and try new and exciting things that engage the community. That's why I've put together a few ideas for the coming year. We'd love to hear about what chapters are doing to change their community one day at a time. Below are some suggestions to making a difference and spreading the word and love of ESA.

If you decide to hold a fundraiser such as the ones listed below, make sure to have your treasurer keep a record of donations collected. These donations can be made to any charity. A few that are animal sponsored include: Heifer Int'l (this is a great one! They provide sustainable animals to impoverished communities and teaching farming practices, a flock of chickens or ducks is a little at \$20), local animal shelters, and SPCAs. If you're looking to broaden your outreach, look at groups such as Susan B Komen for breast cancer, Ronald McDonald House, various ESA scholarships, ESA Disaster Fund, Make-A-Wish, and many others.

For those pet lovers:

Pet Remembrance ceremony – hold a remembrance ceremony where people pay \$1-5 to light a luminary in honor of their past and present pets. This gives people a chance to pay tribute to the unspoken members of the family. This event can be held indoors or outdoors and works great at local malls. Or just take donations. Many people are ecstatic to finally have a place to pay tribute to their little ones.

Volunteer at your local shelter for a few hours. Many shelters will let volunteers come in and spend time playing with the dogs and cats. The best thing is giving baths or taking walks outside. There's nothing like helping a shelter pet get adopted because they feel loved.

For those outdoorsy types:

Do a yard cleanup for a disabled neighbor
 Plant trees for change – take a “green” view and plant new flowers and plants in your yard
 Participate in a walk for one of many causes (weight awareness, Give Thanks Walk, Race for the Cure, etc.)
 Habitat partner day – Volunteer to build an ESA house with Habitat for Humanity, or just work one day.

Do a highway clean up or adopt a highway – these are very easy and it only takes a few hours

Host a drive-in movie night – Rent a projector and a big field and host a backyard drive-in. Throw in some hotdogs, nachos, and popcorn for a fun night

Other ideas:

Adopt an angel tree family – found at most churches, families in need to Christmas items can be adopted. This is a good way to give back individually or as a group. Adopt additional families if you have a larger chapter.

Be a gas station attendant for a day – partner with a local gas station and provide full service stops for paying customers. Customers can donate to a good cause such as St Jude's.

Give a penny fundraiser – ask people for penny donations to support your cause. This may seem like a small amount but it really adds up. Coinstar the funds at State Employees' type banks where there are no exchange fees.

Collect school supplies for local needy schools – many teachers spend out of pocket money to provide items for their classrooms. Collect supplies such as pencils, pens, notepads, and loose leaf paper to donate to schools.

Volunteer at a local soup kitchen – cook, clean, and meet new people

Brandy Boone, Philanthropic News

	
SEPTEMBER 8-9, 2011	WILMINGTON RADIOTHON
NOVEMBER 19, 2011	RALEIGH GIVE THANKS WALK (Crabtree Valley Mall), 7am Registration, 8am walk
NOVEMBER 19, 2011	CHARLOTTE GIVE THANKS WALK (Knights Stadium), 8am Registration, 9am Walk
NOVEMBER 25-27, 2011	CHRISTMAS CAROUSEL (Raleigh Fairgrounds)

2013 SERC CONFERENCE IN ASHEVILLE

North Carolina is proud to be the host of the SERC Convention on November 8 – 9, 2013 in Asheville, NC at the Crowne Plaza Golf and Tennis Resort. Sharon Frost and Kristen Corbell are co-chairing the conference and we have a wonderful group on the planning committee including Freda Rich, Mary Smith, Anthe Tyndell, and Debbie Willoughby. Together the committee visited and researched hotels in Asheville, Wilmington, and Raleigh in June. The Crowne Plaza offered us the best contract including room rates of \$102 for a double and \$107 for a king bed, each with refrigerators and free internet.



We welcome anyone else who would like to join us in the planning. We will meet immediately following the September council meeting. In that meeting we will select a theme and start planning the skit we will be doing in October in Charleston, SC at SERC. If you are interested in joining us, contact Kristen or Sharon. We'd love to have you.

We will be offering a group rate trip to The Biltmore Estate including a self-guided tour of the house, gardens, Antler Village, and a wine tasting on Thursday, November 7th

Wonder why the NC contingent has to wear disguises while in Kansas?

This will be during the Christmas season so you will not want to miss seeing the majesty of The Biltmore Estate decorated at Christmas with our wonderful ESA members!

To see a short video of the hotel visit:

<http://www.hotelmediaonline.com/cpasheville/>

Kristen Corbell and Sharon Frost

JOY-FUL NEWS FROM ALPHA ZETA

Ann Baird married Lester Swafford on May 14th. They are living in Lancaster, SC.

On June 30th, Doris Webber installed the new officer for 2011-2012:

President - Joy Campagna; Vice-President - Jane Winn;
Secretary - Ann Swafford; Treasurer - Joyce Molenaar

Socials - end of the year dinner at Crown Point Restaurant; June 30th; Joy, Doris, Jane and Ann played Putt-Putt at the Lost Duffer Course and ate lunch at Cheddars.

Summer Travels: Jane and friends went to the beach. Joyce Molenaar and her sister-in-law Rita visited in the Netherlands.

Chaplain Report: Freda and Joy had cataract surgery; Tish Philemon having physical therapy. Dave Campagna is recovering from his recent illness and would like to thank everyone for your prayers and cards.

HEARTFELT THANKS from Jean Long



Note to my ESA friends:

As you know my daughter, Lisa, was diagnosed with Acute Myeloid Leukemia in late June and was treated at Duke University Hospital in Durham. The first series of Chemo was successful and currently she is cancer free. She will be returning to the hospital today for her second round of treatment – only a 5 days stay this time. Her overall prognosis is excellent!!

I want to say a big **THANK YOU** for all your prayers and cards. I was up lifted to hear from you. ESAers are the best!! Lisa asked me to pass along a thank you from her – she says you're awesome.

Prayers are powerful.....

WEBMASTER LAURA

Good Morning, Good Afternoon, Good Evening...!
Sometimes you just don't know what time of day it is....
Anyhow, I, as your webmaster would like to ask you all to participate this year in our website. Please give me content that you believe it pertinent for our state communication. What is that you ask? Well, pictures... we love pictures! Dates for events, we do have a calendar... chapter news, exciting stuff, general shoutouts...and whatever President Kristen might want you to communicate.

It is very hard for me to create a good website with no content. We need your help!

Check us out at www.esa-nc.org to see what has been added in the past couple of months. I look forward to your updates!

Goodbye, Saynora, Ciao, Adios, See ya, Till we meet again....

Yea, well can't decide how to close either... Ha!

Love to you all,
-Laura

Beautiful and graceful, varied
and enchanting, small but
approachable, butterflies lead
you to the sunny side of
life. And everyone deserves a
little sunshine. ~Jeffrey
Glassberg



RISE UP TO NEW IDEAS WITH ALPHA NU

Alpha Nu Chapter #1596 is having a planning organizational meeting at 2pm on August 7, 2011 at the Hunkele home. We are going to have lunch followed by our installation of officers. We are also going to plan projects for our up-coming year. New yearbook pages will be handed out to each member, as well as finishing our committees list for this year. My theme for this year is

Rise Up to New Ideas with Alpha Nu.

We are going to look at other philanthropic projects we might like to do this year. Projects such as assisting students with their studies, helping at the school library with duties such as: processing books or re-shelving books. Also we are looking at activities we can provide at our local nursing home and/ or a project at the local hospital. We will discuss if we would like to continue to support the local food pantry, continue to collect hygiene products for the women's shelter and paper products

for the New Hanover Hospitality Home.

As you can see we have a busy afternoon planned and hopefully this will get us off to a great NU Year.

One other bit of great news we now have a new member, Britney Lerlene Abernethy. We are excited to have her join Alpha Nu.

Dotti Hunkele

This year we will continue our traditional and collegiate chapter connection by matching up our collegiate chapters with traditional chapters. We tried to create matches where we knew relationships either already existed or could be formed easily. If we missed something that we need to know about, please let us know.

This year we would like to see the chapters connecting through a variety of possibilities. As we discussed at Leadership on Sunday morning of convention, collegiate and traditional chapters have more in common than you would think. We are all service oriented and love building friendships. So, we would like to suggest some ways you can connect.

Attend each other's pledge ceremonies, installation of officer ceremonies, etc.

Send each other cards (see the NC ESA Roster for addresses)

Send care packages to the collegiates, especially at exam time. Collegiates, the community members love receiving emails and cards from you when you get these things.

Plan a service project together, or invite each other to one you already have planned. Don't forget to have these listed on our Philanthropic Calendar on our NC ESA website

Volunteer together or walk together at the Give Thanks. Walk in Raleigh or Charlotte.

Plan to see each other at council meetings or convention and hang out together!

T&C CONNECTIONS WITH BRITNEY AND SHARON

We look forward to hearing some fun activities you have done together this year. Don't forget to take pictures and share them on our NC ESA website by emailing Laura Gnewuch with the pictures and what event it is!

The match ups for the Traditional and Collegiate Chapters are as follows, but even if you are not connected with a particular chapter, this does not mean you cannot reach out to them. Please do, and tell us about it!

**Britney Abernethy and Sharon Long,
Traditional and Collegiate Connection**



Kristen, Kari, Britney model their membership hats at state convention

Collegiate Chapter	Traditional/Community Chapters
Beta Kappa, UNC-Pembroke	Alpha Nu, Wilmington Beta Psi, Burlington Omicron Phi, Durham
Delta Chi, Belmont Abbey	Alpha Zeta, Charlotte Chi Nu, Harrisburg
Delta Psi, Elon University	Alpha Iota, Greensboro Omega Sigma, Durham Phi Chi, Elon
Omega Pi, East Carolina	Alpha Omega, Greenville Iota Nu, Hillsborough Kappa Nu, Raleigh

SERC 2011 Conference

We have lots of exciting things to share regarding SERC 2011 in Charleston, SC. I know many of us are planning to attend and looking forward to a wonderful convention hosted by South Carolina. If you have not decided if you will be attending, I can only say that SERC has been SOOOO much fun in the past several years. This year should be no different. If you come early, there are lots of tours to take advantage of including a dinner cruise on Thursday night, Culinary tours, historic Charleston walking tours, ghost and graveyard walking tours, Middleton Place Plantations, and Patriots Point Museum. All tours except the dinner cruise are offered Thursday and Friday. Please let Kristen Corbell know if you will be attending SERC or if you need more information on the tours. SERC and Tour registration is due September 30, 2011.

SERC registration forms are on our website www.esa-nc.org under *forms* as well as on the SERC website (in the public section).

SERC Jewelry Fundraiser

SERC is having a jewelry fundraiser for one of the finance projects. These tickets are available to anyone, even if you are not attending SERC. There are two jewelry sets to choose from. The first person's name drawn gets their choice, and the second person will get the second set. One jewelry set is a three-piece freshwater pearl set that is individually knotted. It includes an 18" necklace, a 7" bracelet, and stud earrings. The second set is a set of light green tourmaline earrings and necklace set in silver. Tickets are \$1 each or 6 tickets for \$5. Kristen will have the tickets at the council meeting to sell. This fundraiser will also help the SERC budget and allow them to continue visitations to our state conventions.



SERC NEWS AND VIEWS

For those who have not been able to get into the SERC website, the directions to get on the website for the member only portion are as follows:

- 1) Go to www.serc-esa.com
- 2) On left side, click on the "register"
- 3) It will take you to another page that asks for the code. Enter "membership":
- 4) It will then take you to a page that asks for your information, email, user name and password.
- 5) Once you submit, you will need to go to your email program. It sends you a note about being registered. Click on the link. You are now ready to use the website.
- 6) Again, go to www.serc-esa.com Login in with your user name and password.
- 7) Once done, it will take you back to the "code" page. Do not enter anything this time, just click on the menu where it says "ESA members" The menu will then expand to show the secure menu. Go through the menu to navigate the website. If you have trouble, let Kristen know and she will get you in contact with Bertha if need be.

SERC Chapter Donation Incentive Program

At the IC convention we got lots of information about the conference and SERC in general. Robin Bussey, treasurer, encouraged the chapters in each state to send in their \$10 donations to her. These donations are very important to the many things SERC provides to us, including state visitations. To encourage chapters and states to give these donations, a State chapter donation incentive program is planned for this year. The state with the most percentage of chapters donating to the SERC Treasury (collegiate and community) will receive a basket of goodies to share with their members attending the 2011 conference during their caucus on Friday night. As of right now, North Carolina is at 6%. This \$10 donation is greatly appreciated. So when paying other dues, consider sending SERC \$10 per chapter (with chapter name and state) to:

Robin Bussey
SERC Treasurer
500 Alysia Court #202
Rock Hill, SC 29732

SERC In The Low Country

I hope many of you have taken an opportunity to look at the tours available during your visit to Charleston. We have added one more offering, a dinner cruise. This promises to be a fun outing for those of you who will be taking advantage of an extra day or two to make this a mini-vacation before we get down to SERC business.

We would like to ask you to book your hotel room at the Embassy Suites at your earliest convenience. August 15 is our first deadline to release rooms from the block. If we can determine that we will not need the number of rooms we have reserved, we will be releasing rooms. The final release date is October 12th, but there is another conference going on at the same time. So, booking as early as possible will ensure you get the group rate.

Have you heard the buzz about the vendor fair? We hope to have a variety of artisans in our hallways just waiting for you to sample a taste of Charleston food and art. This is a new venture for SERC and we are anxious to hear your feedback.

As the time for conference is getting nearer, your South Carolina sisters are getting excited about your arrival. We look forward to your arrival and wish you safe travels until we meet at the "Palmetto by the Sea".

Judy Pinner, SERC Conference Chair



ESA Elegance, Rose and Kristen



ESA Southern Charm, Kristen and Sue



Butterflies are self propelled
flowers. ~R.H. Heinlein

ALPHA OMEGA, GREENVILLE

Our chapter hasn't been too active this summer with ESA except for brain storming on what our projects and plans are for next year. Most of us are having a restful and relaxing summer going on vacation and going to the Beach for the weekend.

We had a wonderful Salad Supper at Pam Garris home in May. We each made our favorite salad and brought and it all was delicious. At our salad supper is when we install new officers for the upcoming year. Most of us remained in our current positions. Alpha Omega Officers are:

Margaret Roberts, President
Diane Waters, Vice President
Treasurer, Jennifer Gentry
Secretary, Pam Garris
Parliamentarian, Pam Garris
Immediate Past President: Judy Hagan

We are having our planning meeting on August 18th to appoint our various committees. Our first regular meeting will be in September.

We look forward to a good year.

Margaret Roberts

Congratulations to Beta Psi on 50 years of sisterhood and friendship



KAPPA NU AND DISASTER FUND



Pat and Debbie take a moment to celebrate our St Jude effort

As you know, Kappa Nu, Raleigh is majorly an email chapter (works for us) but we do get together on occasion. Most recently, we gathered at Debbie and Tim's home for an appetizer and a movie. Tim charmed us with his yummy crab dip and his spicy pimento cheese (BTW, he is feeling much better and swimming like a fish). Now, you need to be an adventurer to go to movies with this group... there are always a couple of surprise scenes in our movie choice... obviously we don't know about movie reviews (hee hee). We're gearing up for the St. Jude Give Thanks. Walk and September meeting and yeah... probably another questionable movie.

Turning the page (my phrase when I'm changing the subject with my husband), I encourage each of you to contribute to the Disaster Fund this year. **We are so blessed to have this fund where we can offer assistance to our own members during times of hardship. Please consider pledging one dollar for every year of ESA service or even honoring or memorializing a sister or brother's years of service. Also, if you know of a need, do not hesitate to let me know.** I am here to serve you.

Sincerely, Debbie

Hello to all!!! Hope all is well & you are ready for a new ESA year to begin. I am ready to see my NC sisters in September, seems like a long time since convention.

As finance project committee, Alpha Nu is requesting each chapter bring three FALL items for raffle; ie plant, decorations, baked goods, etc.

We will have a fund raiser at each council meeting and convention in addition to a raffle for a Carolina Beach vacation.

We need the help of each chapter in order to meet our budget this year. Any questions, let me hear them.

Shirley Fowler

Calling All Chapter Presidents !!!!

I would like to meet with each of you at September Council meeting to get to know you, discuss our responsibility to our chapter and state, to share our plans for the year, to share and discuss any topic you feel a need to learn more about as Chapter President. We can learn a lot from each other and I look forward to working with each of you.

Call with questions or suggestions.

Shirley T. Fowler, NC Council Chapter President Liaison

Alpha Nu Chapter - Wilmington

sf101647@gmail.com [910-620-7198](tel:910-620-7198)

September Council Meeting Philanthropic Project Pocket Flag Project

Our September council meeting will include a Hope for Heroes project called the "Pocket Flag Project". We will have 300 United States flags to fold and put in plastic bags with thank you cards to send to our troops overseas. The objective of this project is to get as many flags into the hands of our troops on the front line as possible. To defray the cost of this project, if chapters will contribute \$10 each we can provide our troops with an American Flag to carry with them at all times and let them know how much we appreciate them.

We will also gladly provide chapters with the address of the unit we send the flags to if you want to do anything else for them throughout the year. Many thanks to Freda Rich for telling me about this project. Brandy is busy working on coming up with philanthropic projects for our December and March council meetings. The goal is for our state to have a philanthropic project at each of our council meetings and possibly state convention.

Kristen

SEPTEMBER COUNCIL MEETING

Want a little fitness during your council meeting? Want to help a sister raise some monies for her St. Jude run. I'm offering a 30 min. program at 10:00 AM before our council meeting in September. For a \$5 donation, I will lead you in a class that will get your heart rate up and give you some ideas for you within your own household. You don't need weights, you don't need fancy equipment, just you... and I will teach you!

I am once again running the half marathon in December for the kids of St. Jude...please help me raise some money and learn some new moves while you are at it!

Hope to see you there! Be fit and Alive!

Read my blog...<http://befitandalive.wordpress.com/>

Laura





SEPTEMBER COUNCIL MEETING

Hosted by Iota Nu

When: September 10, 2011

Where: Watts Street Baptist Church, 800 Watts Street, Durham, NC 27701

Time: 9:30 AM Executive Board Meeting

10:00 AM exercise with Laura for St. Jude

10:30 AM Council Meeting

Registration cost: \$11.00

RSVP marcia.kessinger@gmail.com 919-732-2184

Respond by Sept 3rd

Finance Project: 3 fall items per chapter

DIRECTIONS: One block off the Duke East Campus Wall (Buchanan Blvd)... One Block off Gregson St.... between Markham Ave. and Trinity Ave.

I-85 North or South...take the Gregson St./Northgate Mall exit. Heading south into Durham on Gregson (a one way street)...go approx. 1 mile and take a right on Urban (after light at Markham St)...and the church is on the next corner at Watts and Urban Ave.

From 40W to 147N...take the Duke St Exit...go approx. 1 mile and turn left on Urban Ave. (after Trinity and before Markham). Go two blocks and the Church is on the right at the Corner of Watts St and Urban Ave.

From 40 E /85 N to 147S...take Chapel Hill St. (after Swift St. exit)...go to the top of the ramp...turn left. Go to the second light which is Duke St...and follow the directions above.

You may park in the back or go to the corner...take a right on Watts and there is a lots of parking in the church parking lot on the left side of the building. There is also ample street parking too.

Entry is in the back off the parking and playground area. There is handicap parking and access in the back.

